



WEVER & DUCRÉ  
LIGHTING

# LEENS 2.0

311274W5

Project

Type

Notes

Quantity

Date

## GENERAL

Wall

Surface

Signal White

IP20

Interior

Indirect 275 lm

Direct 275 lm

Total 550 lm

RAL 9003<sup>a</sup>

## LED

3000 K

CRI 90

L95 / 50000 h

3-step binning

MR 0.59

MDER 0.54

## OPTICAL

Wide Flood

## PHYSICAL

Length 130 mm

Width 130 mm

Height 30 mm

0.9 kg

## ELECTRICAL

phase-cut dim

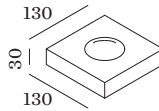
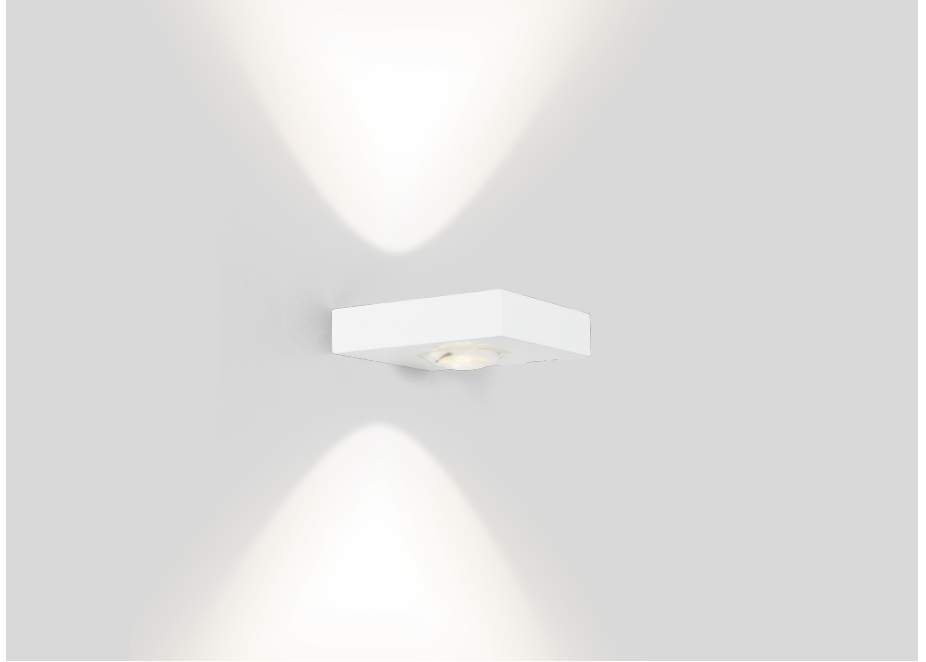
220 - 240 V

Total connected power 7.5 W

PC1

Safety distance 0.3 m

<sup>a</sup> RAL Palette colors may deviate slightly due to production conditions.





**WEVER & DUCRÉ**  
LIGHTING

# LEENS 2.0

311274W5

## Maintenance Factors

Operating Time [h]	10 000	20 000	30 000	40 000	50 000
LLMF	0.98	0.98	0.98	0.98	0.97
LSF	1	1	1	1	1

MF	$LMF \times RSMF \times LLMF \times LSF$	RSMF <sup>a</sup>	Room Surface Maintenance Factor
MF	Maintenance Factor	LLMF	Lamp Lumens Maintenance Factor
LMF <sup>a</sup>	Luminaire Maintenance Factor	LSF	Lamp Survival Faktor

<sup>a</sup> According to "CIE 97, Maintenance of indoor electric lighting systems", 2005, ISBN 3-900-734-34-8. The values must be determined by the planner.