



WEVER & DUCRÉ
LIGHTING

STRANGE 5.0

320671S4

Project _____

Type _____

Notes _____

Quantity _____

Date _____

GENERAL

Wall _____

Recessed _____

White Aluminium _____

IP20 _____

Interior _____

165^a to 210^b lm _____

RAL 9006 ^c _____

LED

3000 K _____

CRI 80 _____

L90 / 50000 h _____

3-step binning _____

PHYSICAL

Length 76 mm _____

Width 50 mm _____

Height 468 mm _____

0.45 kg _____

ELECTRICAL

excl. power supply _____

6 V _____

Total connected power 3.9^a to 5.6^b W _____

500^a to 700^b mA _____

PC3 _____

Safety distance 0.3 m _____

CUTOUT

Length 86 mm _____

Width 470 mm _____

Min. ceiling thickness 2 mm _____

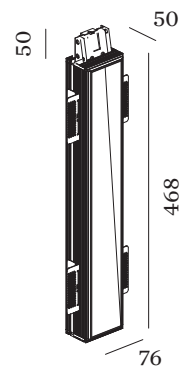
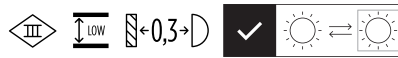
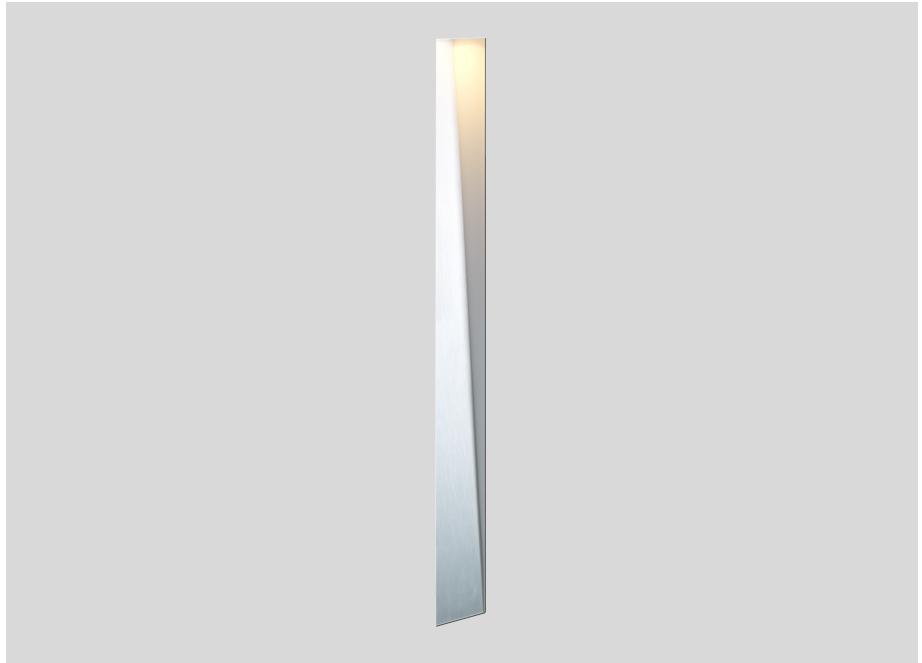
Max. ceiling thickness 25 mm _____

Recessed depth 55 mm _____

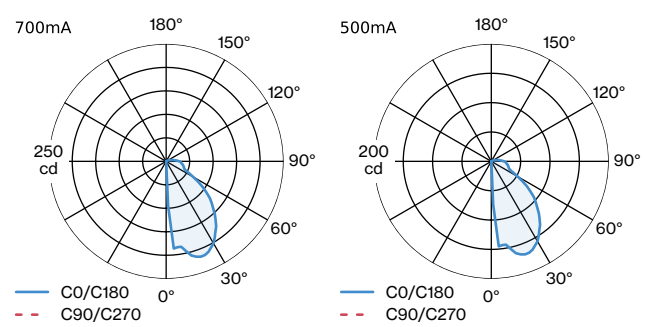
^a 500mA

^b 700mA

^c RAL Palette colors may deviate slightly due to production conditions.



LIGHT DISTRIBUTION



[320671S4] The technical data represent rated values for an ambient temperature of 25°C. The data values for the luminous flux are initially subject to a tolerance of +/- 10%, those for the electrical connected load are initially subject to a tolerance of +/- 10%, and those for the colour temperature are initially subject to a tolerance of +/- 150 K. No liability is assumed for typographical or printing errors. The general terms and conditions of Wever & Ducré BVBA apply.
© Wever & Ducré BVBA · Spinnerijstraat 99/21 · 8500 Kortrijk · Belgium · www.weverducre.com



WEVER & DUCRÉ
LIGHTING

STRANGE 5.0

320671S4

Maintenance Factors

Operating Time [h]	10 000	20 000	30 000	40 000	50 000
LLMF	0.99	0.97	0.95	0.94	0.92
LSF	1	1	1	1	1

MF LMF × RSMF × LLMF × LSF RSMF^a Room Surface Maintenance Factor
 MF Maintenance Factor LLMF Lamp Lumens Maintenance Factor
 LMF^a Luminaire Maintenance Factor LSF Lamp Survival Faktor

^a According to "CIE 97, Maintenance of indoor electric lighting systems", 2005, ISBN 3-900-734-34-8. The values must be determined by the planner.

POWER SUPPLIES

Power Supply

TYPE	L · W · H (MM)	ORDERCODE
Driver 6W 500mA 3-12V	64-35-21	9 0 2 1 4 2 0 1
Driver 6W 700mA 3-8.4V	64-35-21	9 0 2 1 5 2 0 3