



WEVER & DUCRÉ
LIGHTING

RON 2.0 LED

111261B5

Project

Type

Notes

Quantity

Date

GENERAL

Ceiling

Recessed

Jet Black

IP20

Interior

1057^a to 1419^b lm

RAL 9005 ^c

LED

3000 K

CRI 90

L80 / 50000 h

3-step binning

MR 0.59

MDER 0.53

OPTICAL

Flood

Beam angle 36°

PHYSICAL

Length 220 mm

Width 110 mm

Height 85 mm

0.73 kg

wire springs

Tilt min 35°

Tilt max 35°

Rotation 355°

ELECTRICAL

excl. power supply

18 V

Total connected power 15.7^a to 23.2^b
W

LED Inset 11.8^a to 17.4^b W

350^a to 500^b mA

PC3

Safety distance 0.3 m

CUTOUT

Length 210 mm

Width 102 mm

Min. ceiling thickness 4 mm

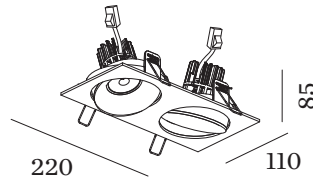
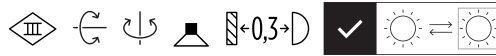
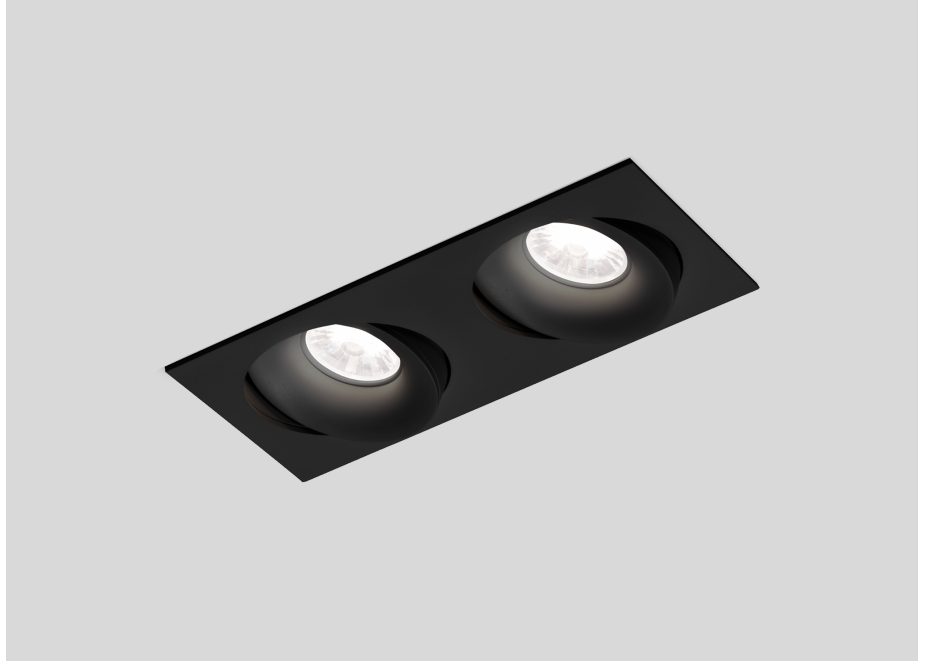
Max. ceiling thickness 25 mm

Recessed depth 90 mm

^a 350mA

^b 500mA

^c RAL Palette colors may deviate slightly due to production conditions.



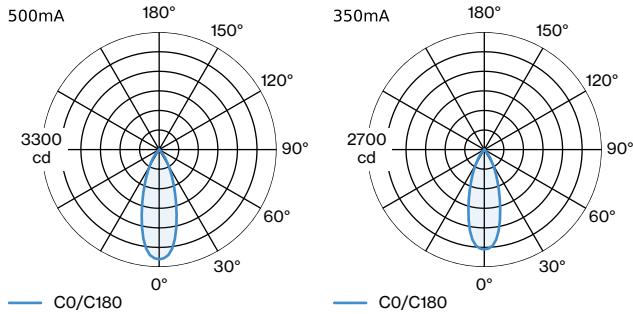


WEVER & DUCRÉ
LIGHTING

RON 2.0 LED

111261B5

LIGHT DISTRIBUTION



CONE DIAGRAM

flood 36° 500mA

h (m)	EO° (lx)	ø (m)
1	3090	0.65
2	770	1.29
3	340	1.94
4	190	2.58
5	120	3.23

flood 36° 350mA

h (m)	EO° (lx)	ø (m)
1	2298	0.65
2	575	1.29
3	255	1.94
4	143	2.58
5	91	3.23

Maintenance Factors

Operating Time [h]	10 000	20 000	30 000	40 000	50 000
LLMF	0.96	0.92	0.88	0.85	0.81
LSF	1	1	1	1	1

MF LMF × RSMF × LLMF × LSF RSMF^a Room Surface Maintenance Factor
 MF Maintenance Factor LLMF Lamp Lumens Maintenance Factor
 LMF^a Luminaire Maintenance Factor LSF Lamp Survival Faktor

^a According to "CIE 97, Maintenance of indoor electric lighting systems", 2005, ISBN 3-900-734-34-8. The values must be determined by the planner.

ELECTRICAL

Power Supply 500mA

TYPE	L · W · H (MM)	VOLTAGE	ORDERCODE
Driver 12W 2-26V	81·40·23	2 - 26V	9 0 2 1 4 4 0 2
Driver 10W 2.5-20V	124·31·21	2.5 - 20V	9 0 2 4 4 4 0 1



WEVER & DUCRÉ
LIGHTING

RON 2.0 LED

111261B5

Power Supply

TYPE	L · W · H (MM)	VOLTAGE	ORDERCODE
Driver 10W 500mA 11-20V	101.5 · 51 · 29.2	11 - 20V	9 0 2 1 4 4 0 5
Driver 10W 350mA 14-28V	101.5 · 51 · 29.5	14 - 28V	9 0 2 2 3 4 0 1
Driver 10W 350mA 12-28V	102 · 38 · 21	12 - 28V	9 0 2 2 3 4 0 2
Driver 15W 350 mA 27-42V	102 · 49 · 29		9 0 2 2 3 4 0 3
Driver 10W 500mA 10-20V	100 · 43 · 22.5	11 - 20V	9 0 2 3 4 4 0 1
Driver 25W 500mA 20-50V	130 · 43 · 31	20 - 50V	9 0 2 5 4 6 0 3
Driver 17.5-20W 350mA 25-50V 500mA 20-40V 700mA 14-28,5V	101.5 · 51 · 29.5	20 - 40V 25 - 50V	9 0 2 1 8 6 0 1
Driver 21W 500mA 28-42V	101.5 · 51 · 29.5	28 - 42V	9 0 2 2 4 7 0 1
Driver 21W 500mA 16-42V	110 · 52 · 22	16 - 42V	9 0 2 2 4 7 0 2
Driver 17-32W phase-cut dim	166 · 34 · 46		9 0 2 2 8 8 0 1

Power Supply 350mA

TYPE	L · W · H (MM)	ORDERCODE
Driver 10W 2.5-26V	124 · 31 · 21	9 0 2 4 3 4 0 1