



WEVER & DUCRÉ
LIGHTING

RON 1.0 LED

111161B5

Project
Type
Notes
Quantity
Date

GENERAL

Ceiling
Recessed
Jet Black
IP20
Interior
530^a to 710^b lm
RAL 9005^c

LED

3000 K
CRI 90
L80 / 50000 h
3-step binning
MR 0.59
MDER 0.53

OPTICAL

Flood
Beam angle 36°

PHYSICAL

Length 110 mm
Width 110 mm
Height 85 mm
0.36 kg
wire springs
Tilt max 35°
Rotation 355°

ELECTRICAL

excl. power supply
18 V
Total connected power 7.9^a to 11.6^b W
LED Inset 5.9^a to 8.7^b W
350^a to 500^b mA
PC3
Safety distance 0.3 m

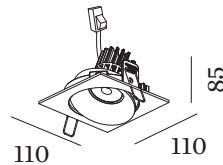
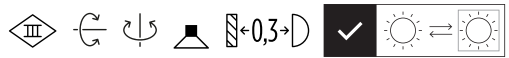
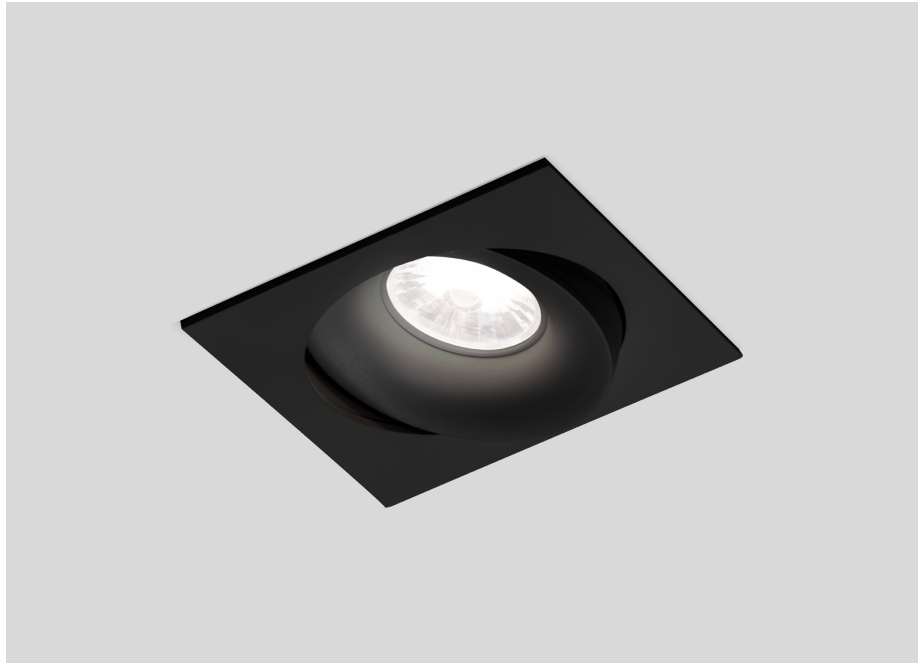
CUTOUT

Diameter 102-104 mm
Min. ceiling thickness 4 mm
Max. ceiling thickness 25 mm
Recessed depth 90 mm

^a 350mA

^b 500mA

^c RAL Palette colors may deviate slightly due to production conditions.



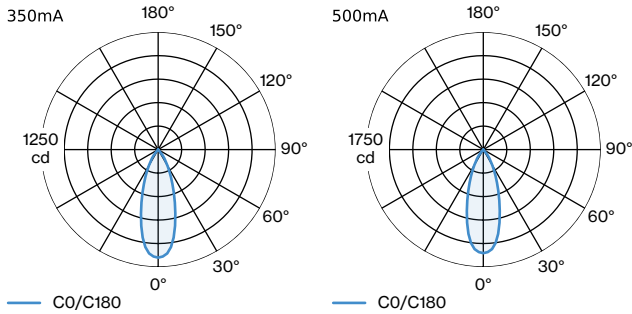


WEVER & DUCRÉ
LIGHTING

RON 1.0 LED

111161B5

LIGHT DISTRIBUTION



CONE DIAGRAM

flood 36° 350mA

h (m)	EO° (lx)	ø (m)
1	1150	0.65
2	287	1.29
3	127	1.94
4	71	2.58
5	46	3.23

flood 36° 500mA

h (m)	EO° (lx)	ø (m)
1	1544	0.65
2	386	1.29
3	171	1.94
4	96	2.58
5	61	3.23

Maintenance Factors

Operating Time [h]	10 000	20 000	30 000	40 000	50 000
LLMF	0.96	0.92	0.88	0.85	0.81
LSF	1	1	1	1	1

MF LMF × RSMF × LLMF × LSF RSMF^a Room Surface Maintenance Factor
 MF Maintenance Factor LLMF Lamp Lumens Maintenance Factor
 LMF^a Luminaire Maintenance Factor LSF Lamp Survival Faktor

^a According to "CIE 97, Maintenance of indoor electric lighting systems", 2005, ISBN 3-900-734-34-8. The values must be determined by the planner.

ELECTRICAL

Power Supply

TYPE	L · W · H (MM)	VOLTAGE	ORDERCODE
Driver 10W 500mA 11-20V	101.5 · 51 · 29.2	11 - 20V	9 0 2 1 4 4 0 5
Driver 10W 350mA 14-28V	101.5 · 51 · 29.5	14 - 28V	9 0 2 2 3 4 0 1
Driver 10W 350mA 12-28V	102 · 38 · 21	12 - 28V	9 0 2 2 3 4 0 2
Driver 10W 500mA 3-20V	102 · 49 · 29		9 0 2 2 4 4 0 2
Driver 10W 500mA 10-20V	100 · 43 · 22.5	11 - 20V	9 0 2 3 4 4 0 1