



WEVER & DUCRÉ
LIGHTING

PLANO 1.0 LED

118161B5

Project

Type

Notes

Quantity

Date

GENERAL

Ceiling

Recessed

Jet Black

IP20

Interior

480^a to 645^b lm

RAL 9005^c

LED

3000 K

CRI 90

L80 / 50000 h

3-step binning

MR 0.59

MDER 0.53

OPTICAL

Flood

Beam angle 36°

PHYSICAL

Length 85 mm

Width 85 mm

Height 90 mm

0.26 kg

Tilt min 35°

Tilt max 35°

Rotation 355°

ELECTRICAL

excl. power supply

18 V

Total connected power 5.9^a to 8.7^b W

LED Inset 5.9^a to 8.7^b W

350^a to 500^b mA

PC3

Safety distance 0.3 m

CUTOUT

Length 74 mm

Width 78 mm

Min. ceiling thickness 2 mm

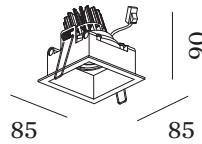
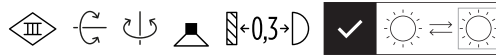
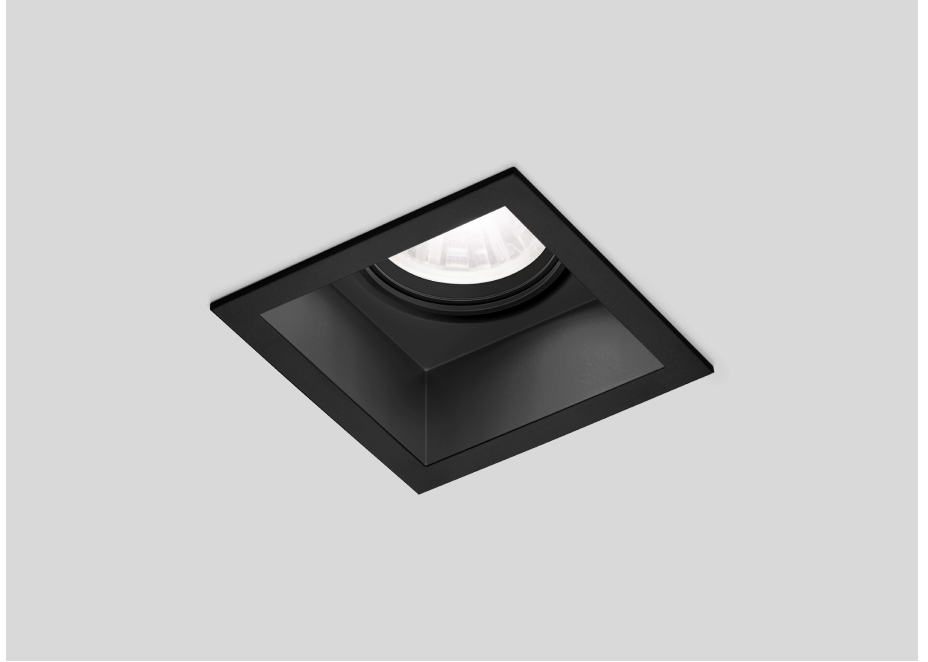
Max. ceiling thickness 18 mm

Recessed depth 95 mm

^a 350mA

^b 500mA

^c RAL Palette colors may deviate slightly due to production conditions.



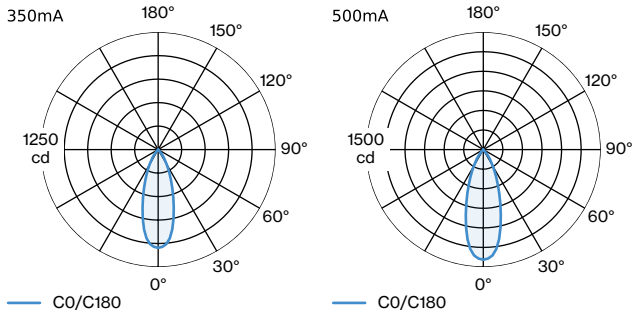


WEVER & DUCRÉ
LIGHTING

PLANO 1.0 LED

118161B5

LIGHT DISTRIBUTION



CONE DIAGRAM

flood 36° 350mA

h (m)	EO° (lx)	ø (m)
1	1046	0.65
2	261	1.29
3	116	1.94
4	65	2.58
5	41	3.23

flood 36° 500mA

h (m)	EO° (lx)	ø (m)
1	1407	0.65
2	352	1.29
3	156	1.94
4	87	2.58
5	56	3.23

Maintenance Factors

Operating Time [h]	10 000	20 000	30 000	40 000	50 000
LLMF	0.96	0.92	0.88	0.85	0.81
LSF	1	1	1	1	1

MF LMF × RSMF × LLMF × LSF RSMF^a Room Surface Maintenance Factor
 MF Maintenance Factor LLMF Lamp Lumens Maintenance Factor
 LMF^a Luminaire Maintenance Factor LSF Lamp Survival Faktor

^a According to "CIE 97, Maintenance of indoor electric lighting systems", 2005, ISBN 3-900-734-34-8. The values must be determined by the planner.

MOUNTING

Plasterkit

TYPE	L · H (MM)	ORDERCODE
PLANO 1.0	180 · 180	9 0 0 1 7 1 0 4

Metal Spring clip

TYPE	(MM)	ORDERCODE
MR16 LED PAR16 max. 12W	59	7 3 2 4 0 2 0 3



059



WEVER & DUCRÉ
LIGHTING

PLANO 1.0 LED

118161B5

Spring clip

TYPE	COLOUR	(MM)	ORDERCODE
MR16 LED PAR16 max. 12W	Pure White	51	7 3 2 4 0 6 5 1
MR16 LED PAR16 max. 12W	Signal Black	51	7 3 2 4 0 6 5 2
MR16 LED PAR16 max. 12W	Gold	51	7 3 2 4 0 9 4 0
MR16 LED PAR16 max. 12W	Grey	51	7 3 2 4 0 9 4 1
MR16 LED PAR16 max. 12W	Copper	51	7 3 2 4 0 9 4 2

ELECTRICAL

Power Supply

TYPE	L · W · H (MM)	VOLTAGE	ORDERCODE
Driver 10W 500mA 11-20V	101.5-51-29.2	11 - 20V	9 0 2 1 4 4 0 5
Driver 10W 350mA 14-28V	101.5-51-29.5	14 - 28V	9 0 2 2 3 4 0 1
Driver 10W 350mA 12-28V	102-38-21	12 - 28V	9 0 2 2 3 4 0 2
Driver 10W 500mA 3-20V	102-49-29		9 0 2 2 4 4 0 2
Driver 10W 500mA 10-20V	100-43-22.5	11 - 20V	9 0 2 3 4 4 0 1